

5th Annual Technology & Innovation Conference

Steven Coles
Chief Information & Business
Improvement Officer
Sydney, April 2011

Delivering business agility through Shared Component Technology reusing Legacy Assets

Agenda

- 1** Introduction to Allianz
- 2** Allianz IT – Our Core Principles
- 3** Component Based Architecture in Practice
- 4** Our Experiences
- 5** Summary
- 6** Questions

1

- 1 Introduction to Allianz**
- 2 Allianz IT – Our Core Principles
- 3 Component Based Architecture in Practice
- 4 Our Experiences
- 5 Summary
- 6 Questions

About Allianz Australia

Who we are . . .

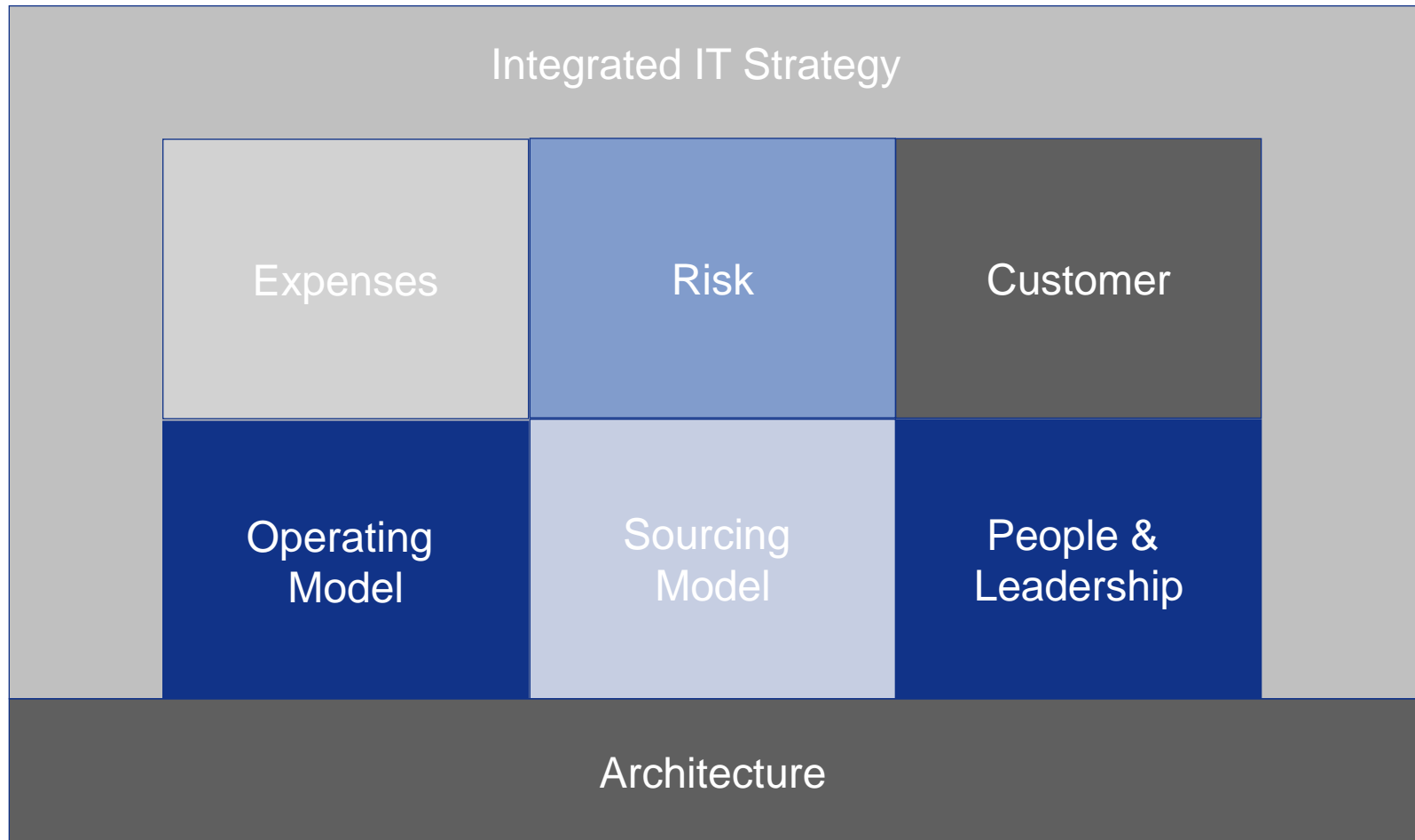


- Among one of the top 25 of the world's largest corporations based on revenues
- Services approximately 76 million customers in about 70 countries
- The world's largest P&C insurer based on revenues
- Allianz Australia is one of Australia's largest general insurers
- Deliver personal, life, CTP, commercial and workers' compensation insurance and operate throughout Australia and New Zealand
- Leading Specialist subsidiaries Allianz Life, Club Marine, Hunter Premium Funding, Allianz Finance

2

- 1 Introduction to Allianz
- 2 Allianz IT – Our Core Principles**
- 3 Component Based Architecture in Practice
- 4 Our Experiences
- 5 Summary
- 6 Questions

Allianz IT – Our Core Principles



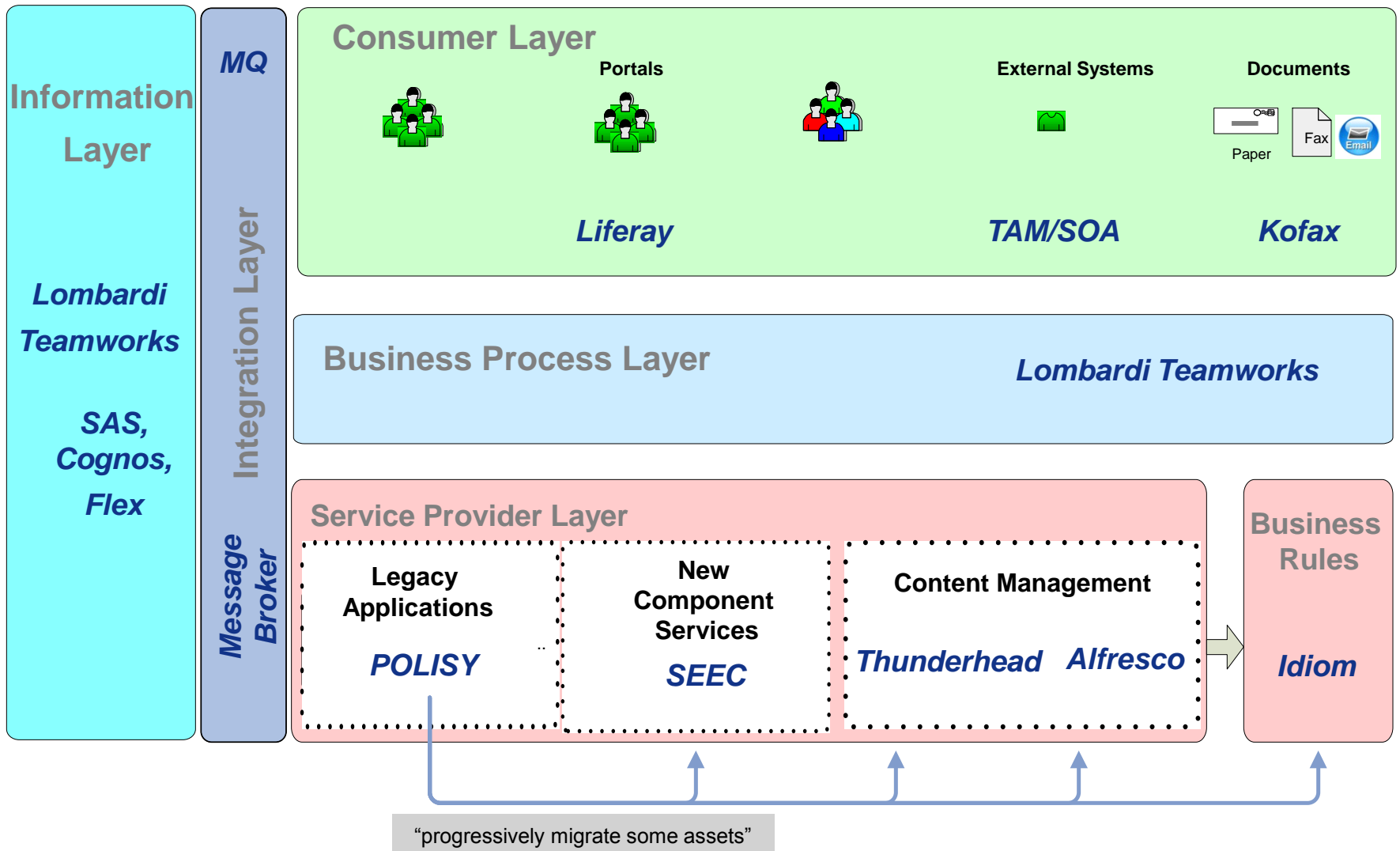
3

- 1 Introduction to Allianz
- 2 Allianz IT – Our Core Principles
- 3 Component Based Architecture in Practice**
- 4 Our Experiences
- 5 Summary
- 6 Questions

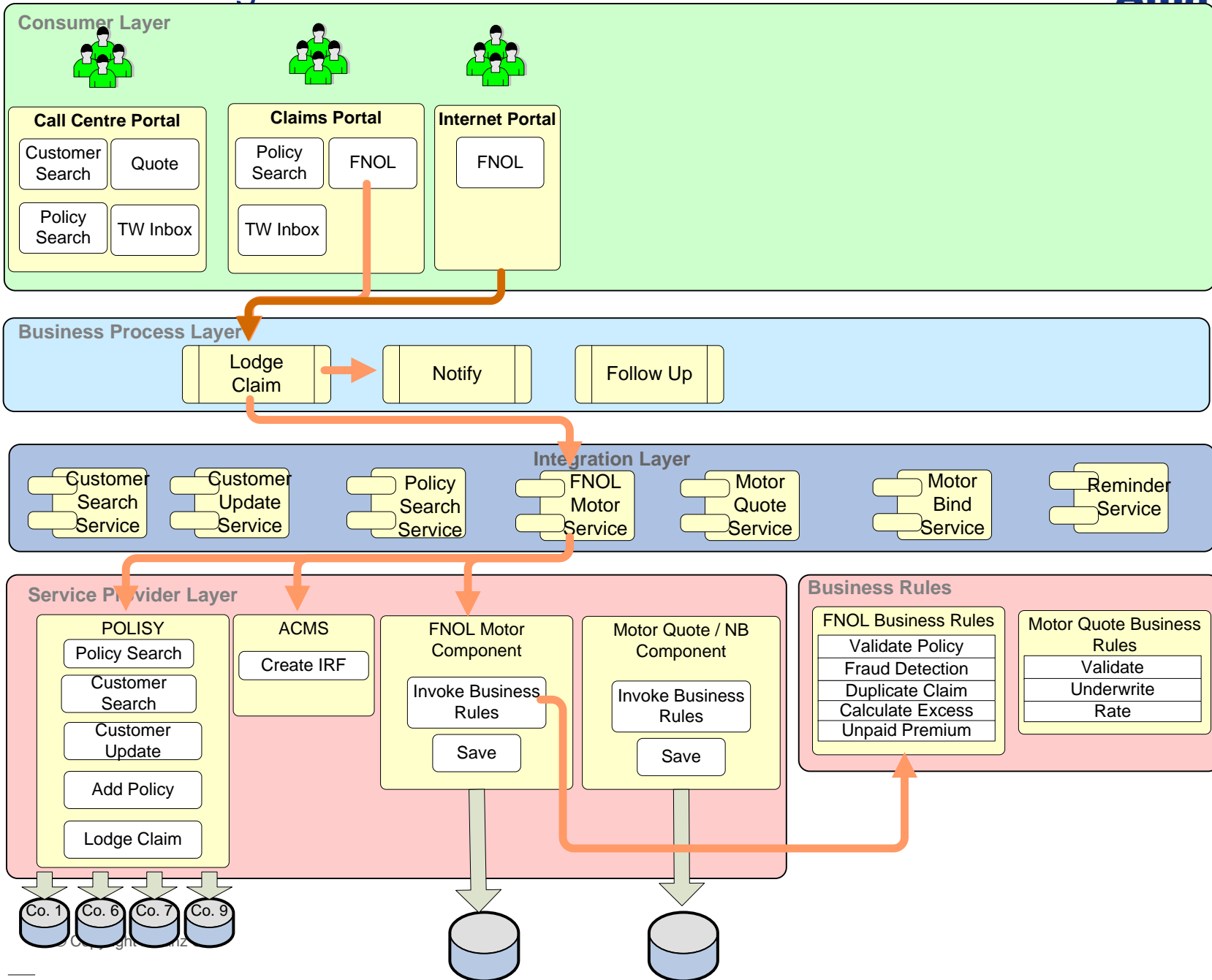
Disclaimer

- Not a one size fits all strategy
- Tailored to Allianz Australia – aligned with our core principles
- Not a quick fix solution – part of a 7+ year journey but ...
 - Benefits delivered along the journey
 - Extending capability
 - Delivered in manageable chunks

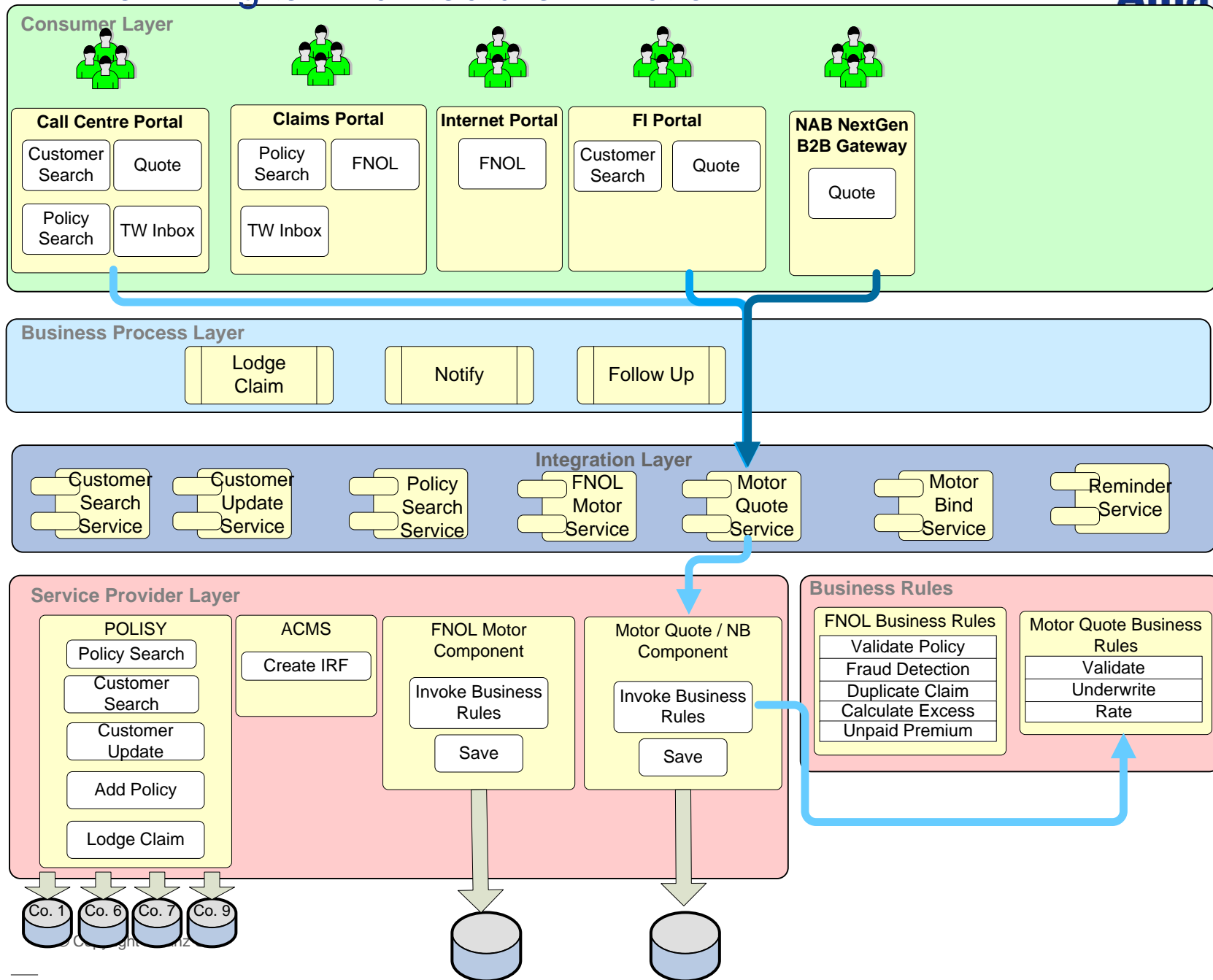
**We are still
learning**



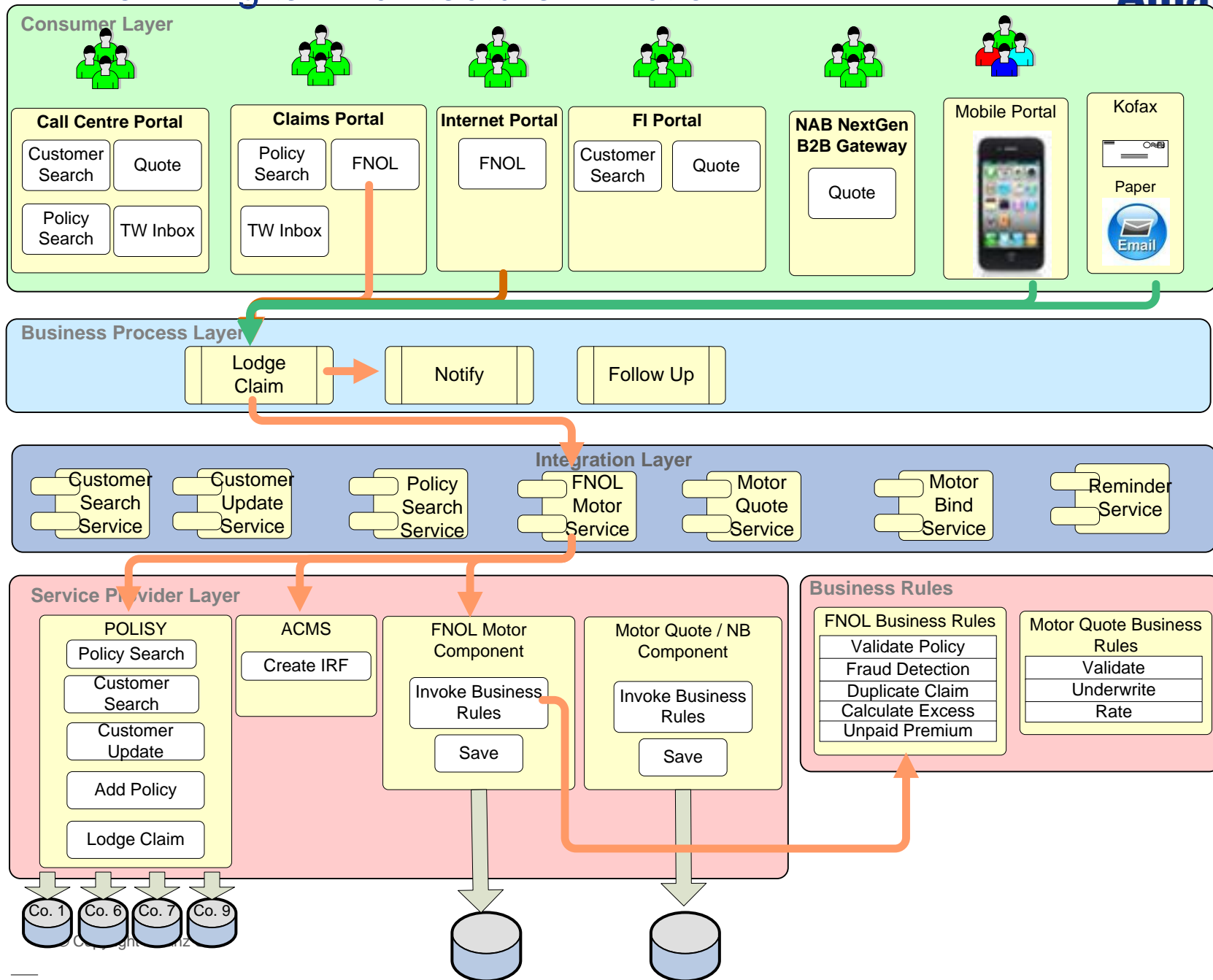
Allianz Digital Architecture in Action



Allianz Digital Architecture in Action



Allianz Digital Architecture in Action

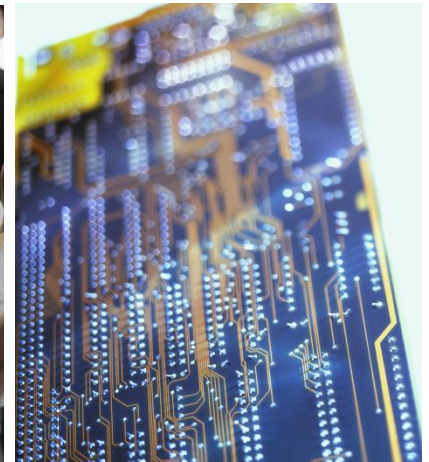
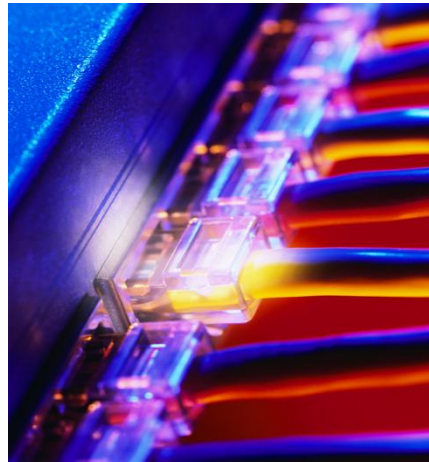


4

- 1 Introduction to Allianz
- 2 Allianz IT – Our Core Principles
- 3 Component Based Architecture in Practice
- 4 Our Experiences**
- 5 Summary
- 6 Questions

Our Experiences

The good, the bad and the ugly



- Open Source Technology
- Multi Layer Architecture (development, support & infrastructure implications)
- Business & Technical Commitment
- Leadership
- Front End Loaded Model
- Agility
- BPM – Measurable benefits from day 1 (eg 56% productivity improvement)
- Be prepared to launch, listen & learn from experience

What Do People Say?

Business Quotes:

“new solutions are better at managing good complexity and removing bad complexity”

“I have an insight into how my business works that I never thought was possible – now I can improve it for the better”

“It just makes my life easier, I can now focus more on the customer”

IT Quotes:

"re-use of code becomes pragmatically possible"

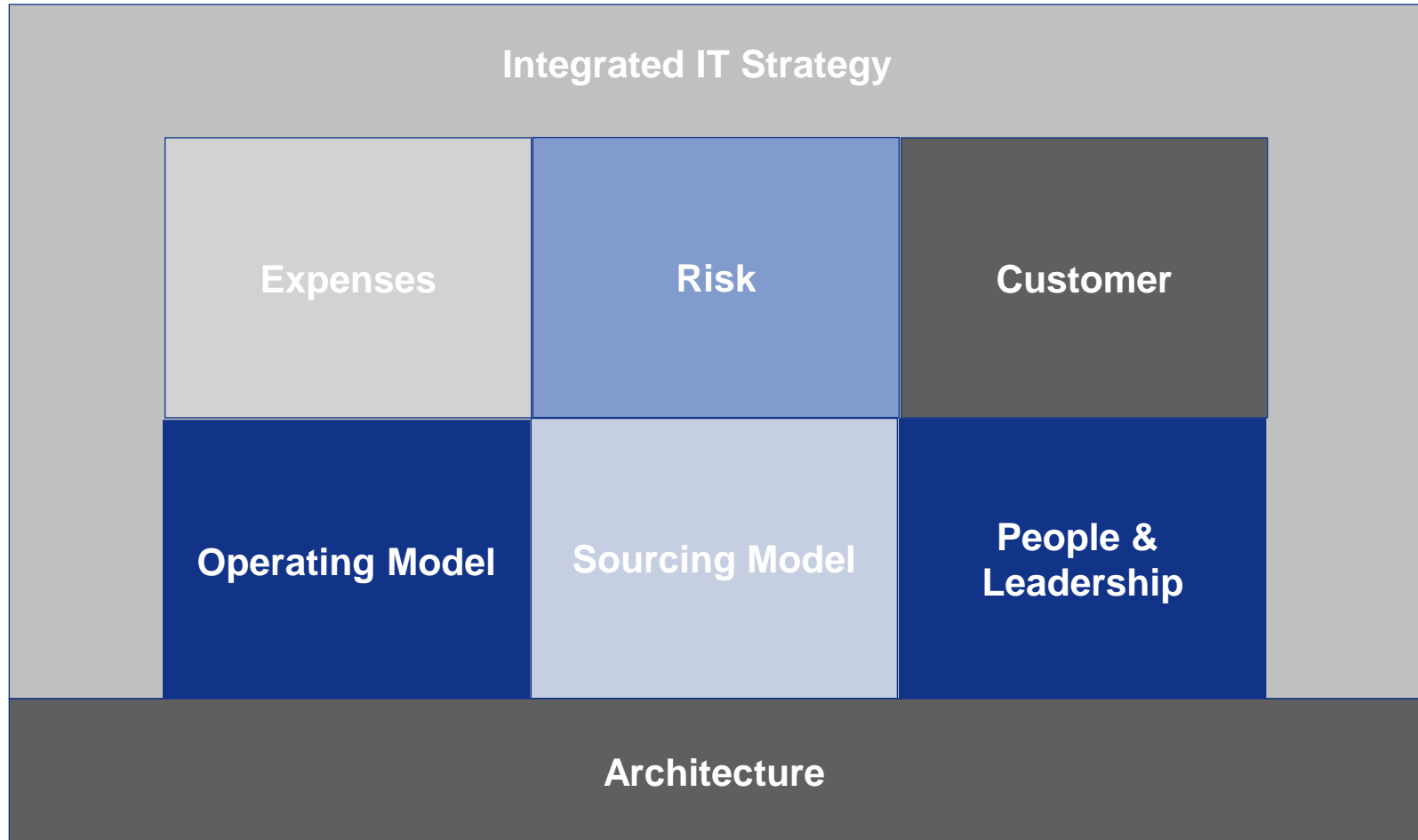
"consistency of business logic delivery across a wide range contexts is a lot more achievable with a component development model"

"it is helping us become more predictable in terms of design, estimation and quality"

5

- 1 Introduction to Allianz
- 2 Allianz IT – Our Core Principles
- 3 Component Based Architecture in Practice
- 4 Our Experiences
- 5 Summary**
- 6 Questions

Allianz IT – Our Core Principles



steve.coles@allianz.com.au

Questions

